



# RREB1 Polyclonal Antibody

<b>Catalog No</b>	YP-Ab-01996
<b>Isotype</b>	IgG
<b>Reactivity</b>	Human;Mouse
<b>Applications</b>	WB;IHC;IF;ELISA
<b>Gene Name</b>	RREB1
<b>Protein Name</b>	Ras-responsive element-binding protein 1
<b>Immunogen</b>	The antiserum was produced against synthesized peptide derived from human RREB1. AA range:560-609
<b>Specificity</b>	RREB1 Polyclonal Antibody detects endogenous levels of RREB1 protein.
<b>Formulation</b>	Liquid in PBS containing 50% glycerol, 0.5% BSA and 0.02% sodium azide.
<b>Source</b>	Polyclonal, Rabbit,IgG
<b>Purification</b>	The antibody was affinity-purified from rabbit antiserum by affinity-chromatography using epitope-specific immunogen.
<b>Dilution</b>	WB: 1/500 - 1/2000. IHC: 1/100 - 1/300. ELISA: 1/20000.. IF 1:50-200
<b>Concentration</b>	1 mg/ml
<b>Purity</b>	≥90%
<b>Storage Stability</b>	-20°C/1 year
<b>Synonyms</b>	RREB1; FINB; Ras-responsive element-binding protein 1; RREB-1; Finger protein in nuclear bodies; Raf-responsive zinc finger protein LZ321; Zinc finger motif enhancer-binding protein 1; Zep-1
<b>Observed Band</b>	180kD
<b>Cell Pathway</b>	Nucleus speckle .
<b>Tissue Specificity</b>	Expressed in heart, placenta, lung, liver, skeletal muscle, kidney and pancreas. Not found in the brain.
<b>Function</b>	function:Transcription factor that binds specifically to the RAS-responsive elements (RRE) of gene promoters. May be involved in Ras/Raf-mediated cell differentiation by enhancing calcitonin expression. Represses the angiotensinogen gene. Negatively regulates the transcriptional activity of AR. Potentiates the transcriptional activity of NEUROD1.,PTM:Phosphorylated upon DNA damage, probably by ATM or ATR.,sequence caution:Contaminating errors.,sequence caution:Translation N-terminally extended.,similarity:Belongs to the krueppel C2H2-type zinc-finger protein family.,similarity:Contains 15 C2H2-type zinc fingers.,subunit:Interacts with NEUROD1 and AR.,tissue specificity:Expressed in heart, placenta, lung, liver, skeletal muscle, kidney and pancreas. Not found in the brain.,

**Background**

ras responsive element binding protein 1(RREB1) Homo sapiens The protein encoded by this gene is a zinc finger transcription factor that binds to RAS-responsive elements (RREs) of gene promoters. It has been shown that the calcitonin gene promoter contains an RRE and that the encoded protein binds there and increases expression of calcitonin, which may be involved in Ras/Raf-mediated cell differentiation. Multiple transcript variants encoding several different isoforms have been found for this gene. [provided by RefSeq, Dec 2009],

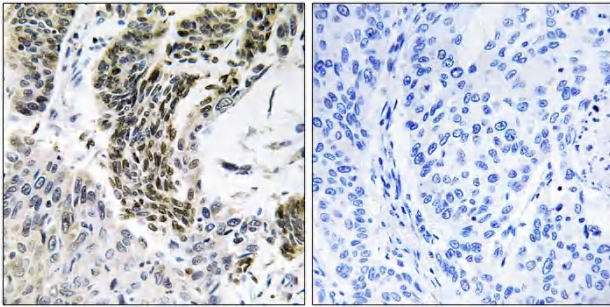
**matters needing attention**

Avoid repeated freezing and thawing!

**Usage suggestions**

This product can be used in immunological reaction related experiments. For more information, please consult technical personnel.

## Products Images



Immunohistochemistry analysis of paraffin-embedded human lung carcinoma tissue, using RREB1 Antibody. The picture on the right is blocked with the synthesized peptide.